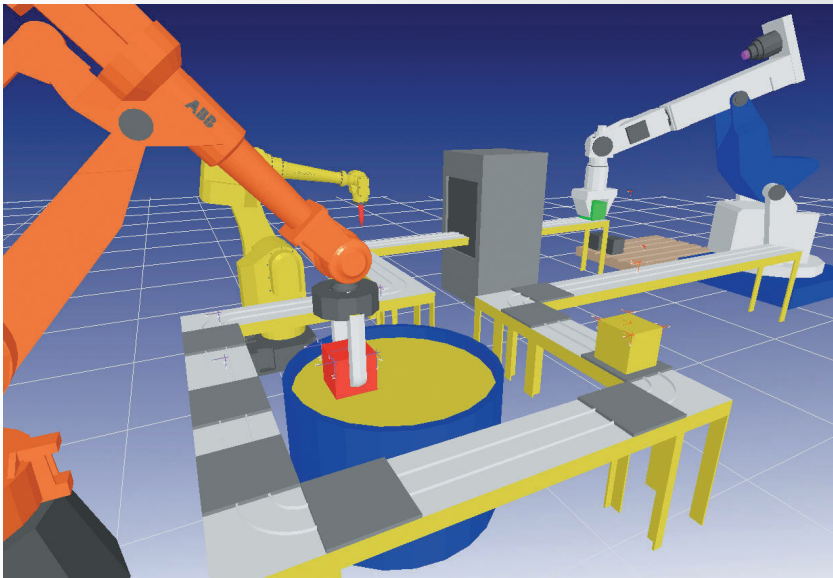




NEWS



Top News

New Multi-Options for Multiple Kinematics

The new EASY-ROB™-Version 4.007 makes it possible to **link kinematics**. For example, users can link the robot to linear external axis and to gripper. Or a gantry with mounted robot and a conveyor below.

Also already linked kinematics can be **additionally interlinked**.

Thus connections between complex systems can be simulated, for example the transfer of work pieces.

That means: With EASY-ROB™ **complex "virtual working areas"** can be created. All relative motions in a working cell are linked to each other – consequences of a change will be visualized for all kinematics. Special feature is the ability to link kinematics "in the middle of the chain".

There is no need to simulate a tool at the end of the kinematics chain – for example a laser resonator can be attached to the third axis.

Grab of kinematics

The new kinematics features allow to grab during program run. For example grab and release of tools (tool change) as a link of the kinematics at the flange.

C-Functions for selection

The powerful API (Application Programming Interface) of EASY-ROB™ was enlarged by additional commands: The kinematics in a working cell can be selected by C-functions (see commands on the flipside).

IN THIS ISSUE

Top News: New multi-options for multiple kinematics

Version 4.007 for download

Multi-KIN Library

Added value with CodeMeter-Dongle

New C-Functions

Trade Fair: Motek at Sinsheim



27 to 30 Sept 2005
at Sinsheim
Hall 6, Booth 6510

Together with Teconsult we present:

- **Robot simulation with EASY-ROB™**
Cell layout planning, reachability check, collision detection, exceeding of travel ranges and speed, virtual developments of new kinematics
- **Offline programming (OLP) with FAMOS robotic®**
Process based programming at the work piece, program optimization, cycle time estimation
- **Calibrating robotics with ROSY**
Calibration and measurement as an example of the Adept robot

Our partner at the fair:

www.teconsult.de

Contact: Dr. Lukas Beyer

Highly Portable: EASY-ROB™ inside the CodeMeter

The new USB stick is more than a WIBU-KEY Dongle

Even before EASY-ROB™ could be used portable with the WIBU-KEY Dongle.

The needs of our clients to be able to take along the program to any computer is even better satisfied by

the new CodeMeter USB stick. The CodeMeter stick contains two logic drives. One of them includes EASY-ROB™ in the licensed version.

Through connecting a computer with Windows XP to the USB port the new program will be running immediately – no reboot, no installation. Already generated simulation data and CAD files can be located “somewhere” in the network, at a central server. Or – and that is one of the advantages of the new CodeMeter – at the second partition of the stick with 250 MB of disk space.

Therewith EASY-ROB™ is at need even more portable for presentations, weekend

working, changings and data transfer with partner companies ...

Added value always at hand

The second logic drive of the CodeMeter serves as a “security area” for work results or other data while using the delivered coding software.

The clou: EASY-ROB™ delivers the stick with a password manager.

All passwords always at hand.



Automatic fill-in of the password inputs through the Internet-Explorer – no more typing and phishing protection against external password requests.

Continued from Top News from page 1 C-Functions for Multiple Kinematics

int inq_Get_n_devices (void)

Returns the number of the kinematics/robotics in the work cell

int inq_Get_c_devices_idx (void)

Returns the index of the active kinematic

int inq_Set_device_idx (int device_idx)

Sets the kinematics via the index “active”

*int inq_Set_device_name (char *device_name)*

Sets the kinematics via the individual name “active”

Version 4.007 for Download

The new version 4.007 is available as a download in the EASY-ROB customer area. It also contains the new Multi-KIN libraries as well as operation references for multiple kinematics. Required is a license of the full version of EASY-ROB™ 4.0.

www.easy-rob.com

Time Saving Tool

The Multi-KIN Library

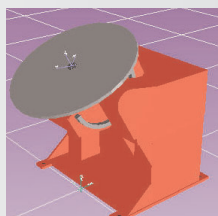
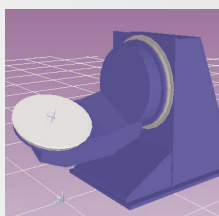
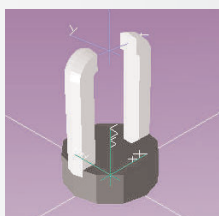
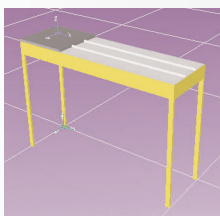
You need more than robots

EASY-ROB™ not only provides libraries with common robots from ABB to Tricept. With the Multi-KIN library, concepts of other kinematics systems are available:

- Conveyor
- Gantries
- Linear axis
- External positioner and axis.

All these samples can be altered in their dimensions or adjusted through imported CAD geometries.

Available interfaces are VRML 1.0 and 2.0 (197), STL in binary or ASCII format or the IGRIP® part file format.



EASY-ROB NEWS

EASY-ROB NEWS is the regular information service for customers of EASY-ROB™ and interested persons.

Publisher and responsible for content:

Stefan Anton, Kennedyallee 109,
D-60596 Frankfurt am Main

Editorial: Stefan Anton, Jürgen Juhnke

Design and production: vaya/marketing,

Am Zauberberg, Robert-Koch-Strasse 116,
D-65779 Ruppertshain, Phone +49 61 74
2 93 98-72, Fax +49 61 74 2 55 78 54,
info@vayamarketing.de

Contact: Stefan Anton, Phone +49 69 67 72 42
87, Fax + 49 69 67 72 43 20, info@easy-rob.com,
www.easy-rob.com