



NEWS



Since January 1st, 2004, the headquarter of EASY-ROB is located in the Kennedyallee in Frankfurt. Some of our customers and partners have already visited us. Please, also feel invited – visit us and talk with us about the world of the 3D robot simulation: We look forward to seeing you!

Top News

New: Video Mode For Simulations

Easy recording and presentation of simulations via video mode

Discover a new functionality of EASY-ROB™: The video mode. Forget external video capture programs and the difficult handling of simulations that have already been developed: With the new avi-recorder you now can record very complex and time-consuming simulations. This saves a lot of time in communicating to colleagues and customers. In addition, the video sequences can be sent easily by email. They are also available mobile as descriptive pictorial material for different simulations of robot cells – very useful in sales and marketing.

Powering the new functionality is a picture recording program, which constantly adds new pictures from simulation to an avi-file. The entire record is then program-

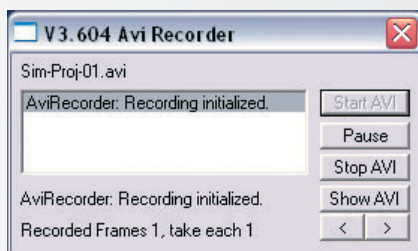
Do you have more questions about using the new avi-recorder? A detailed guide is available for download at www.easy-rob.com (downloads).

med to 25 pictures per second, so that the video sequence appears fluently to us.

The video mode is available with the new update of the EASY-ROB™ standard version 3.606. With your maintenance contract you can download the update as a zip-file yourself simply at www.easy-rob.com.

Unzip it directly in the EASY-ROB™ directory and use the video mode instantly for recording your simulations.

Do you need more information? Just give us a call at +49 69 67724287.



IN THIS ISSUE

New: Video Mode For Simulations

More Comfort With The Formula Parser

Faster: Navigation Around Any Selected Points

EASY-ROB Plans for 2004

More Comfort With The Formula Parser

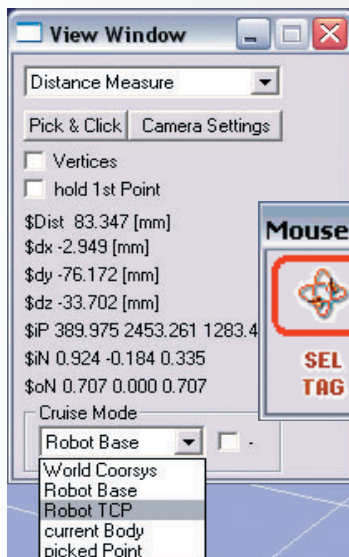
Define your own variables and save associated values

Now robot cells can be constructed and optimized much easier: Values – measurable via Pick & Click – can be assigned to own variables via the formula-parser. The variables, their values as well as system variables are now available for all further calculations and formulas. Taking notes of endless numbers is not necessary anymore – with the formula parser you have all variables and values at hand.

Comfortable: With the help of the new formula parser you can realize variable travel ranges. The formula parser is also a great help for the measurement of distances between bodies – which in the new EASY-ROB™ version 3.6 is easily done with Pick & Click.

EASY-ROB™ – focusing on customer's needs.

New Cruise Mode: Faster Navigation Around Any Selected Points



Fast navigation in the cruise mode and easy simulation with own variables in the formula parser.

A new cruise mode replaces the difficult navigation in the world coordinate system: Now you can select any point in the 3D-world and turn the simulation around this point.

With the new cruise mode you can always pull the process point into your view fast and exactly; measuring distances is easier. Select the turn around the robot basis, the selected body, the TCP (Tool center point) or any other point you like to choose.

EASY-ROB Plans for 2004

- An extension of functionalities for the CAD import is planned for the 2nd quarter 2004. It will be possible to import the VRML 2.0 format into the program.
- Also in the 2nd quarter: A 100 times faster collision detection will bring substantial time savings.
- Did you always want to simulate several robots at the same time in EASY-ROB™? Look forward to the 3rd quarter of 2004: EASY-ROB™ will then be able to work with several kinematics.

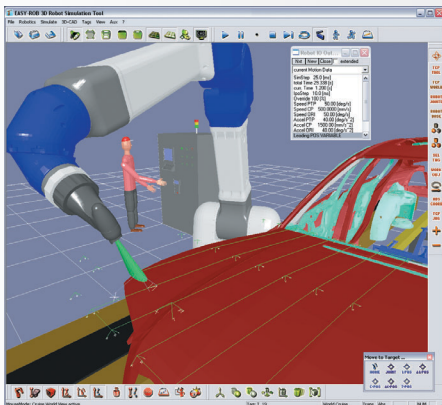
Do you have comments, ideas of feedback about EASY-ROB™?

We look forward to hearing from you.

Please give us a call to +49 69 67724287 or email us at service@easy-rob.com

Do you know EASY-ROB™?

The Easy Way Of Robotics



EASY-ROB™ is a powerful, comprehensive modeling and simulation tool to create high quality and high speed rendered images for animation of 3D robot Scenes. Processes from the robotics and mechanical engineering field are programmed and

visualized immediately. The program is a Microsoft Windows® application using the capabilities of OpenGL™. It is especially designed to fulfill requirements of medium-sized companies and educational facilities.

Your Advantages

- Inexpensive feasibility studies
- Virtual layout planning
- Optimized and improved solutions and motions
- No need of expensive prototypes
- Reduction of down times in production
- Quicker start-up

More info at www.easy-rob.com

EASY-ROB NEWS

EASY-ROB NEWS is the regular information service for customers of EASY-ROB™ and interested persons.

Publisher and responsible for content:
Stefan Anton, Kennedyallee 109,
60596 Frankfurt am Main

Editorial: Stefan Anton, Anke Hsu

Design and production: vaya/marketing,
Am Zauberberg, Robert-Koch-Straße 116d,
65779 Ruppertshain (Taunus), Telefon (0 61 74)
20 37 81, Fax -83, info@vayamarketing.de

Contact: Stefan Anton, Tel. (0 69) 67 72 42 87,
Fax (0 69) 67 72 43 20, info@easy-rob.com,
www.easy-rob.com