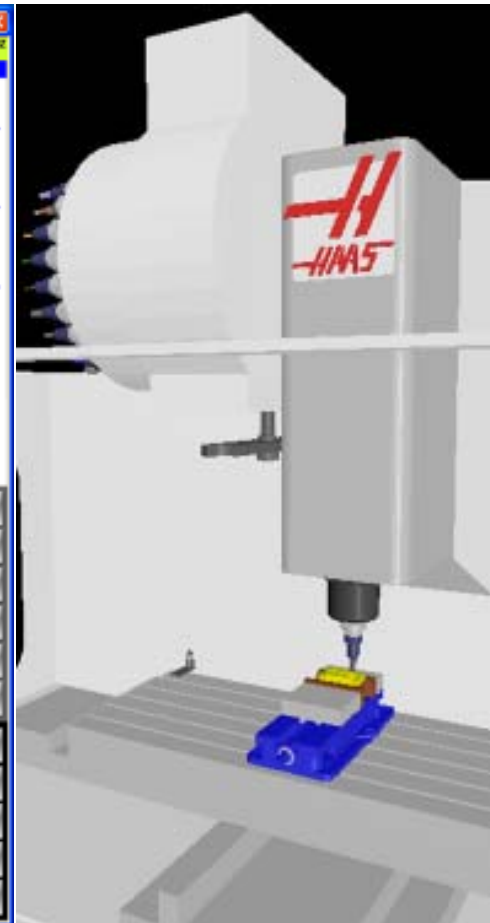
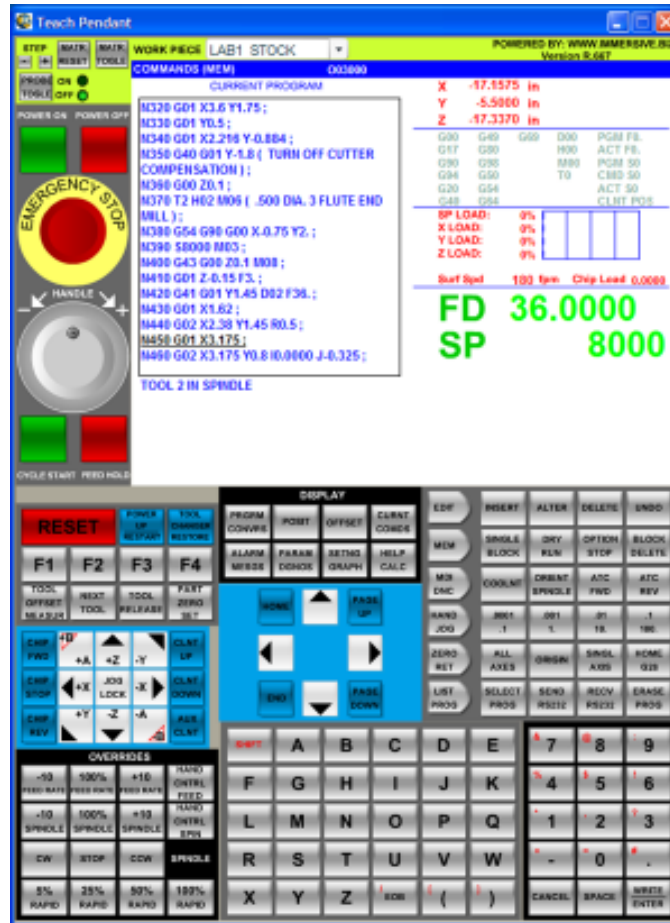


HAAS EMULATOR

The World's First and Only Haas Virtual Training Environment

The Haas Virtual Training Environment combines *powerful* Emulator “flight-simulator” technology with a *flexible* Internet-based learning content management system to deliver a truly innovative learning experience.

Now, anyone can learn actual Haas CNC automation anytime and anywhere.



Haas Emulator mimics actual Haas CNC controls and machines

Mimic Reality

Mill and Lathe Supported

Edit, Load, Run and Save Haas NC Programs

Set Tool and Work Offsets

Practice with Haas Control Panel Interface

Real-time Material Removal

Canned-Cycles Supported

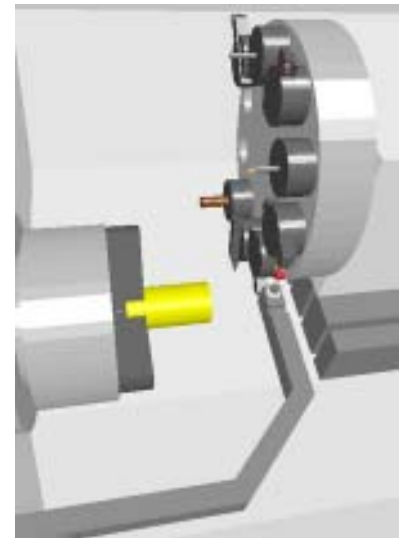
Haas Alarms Supported

Learning Productivity Tool

Unlimited access to train and rehearse in the Haas Virtual Training Environment enables learners to develop greater confidence and proficiency prior to performing actual procedures and operating equipment.

Significant Benefits

- Cost-effective and safe learning environment
- Eliminate access barriers due to actual equipment cost/location
- Increase training-contact-time with CNC and other automation
- Minimize risk of damaging equipment or personal injury
- Reduce training bottlenecks due to student to equipment ratio



Haas lathe with touch-probe arm



HAAS EMULATOR

LCMS

Total Training Solution
basic curriculum includes:

- Haas Mill Setup
- Haas Mill Programming
- Haas Lathe Setup
- Haas Lathe Programming

AIM Process

Assess Learner Skills

Instruct Learners Online

Measure Learner Results

Minimum Client Configuration:

PC, Windows 2000, NT or XP
512 MB RAM Minimum
Internet or Network Connection

Immersive Engineering, Inc.
Tel: +1 248.865.2001
Fac: +1 248.671.5342
Web: www.immersive.biz
www.support@immersive.biz

Haas Virtual Training Environment Learning Content Management System

The Learning Content Management System (LCMS) allows the Haas Virtual Training Environment to be truly flexible. With the LCMS learning content can be modified, authored, organized, and distributed over the Internet or local network.

The LCMS increases productivity of managing, tracking and recording learner progress while improving the quality of traditional training, certification, and professional development methods.

The LCMS AIM process helps to quickly Assess learner skills, Instruct learners online, and Measure learner results.

Haas Automation, Inc. | My Immersive | Navigator | Glossary | Resources | Help | Logout

NPC Class | Course Navigator | Hole Manufacturing | Common Hole Manufacturing Methods | Page 2 of 14

MC | previous | next | 34

G83 Peck Drill Canned Cycle

The G83 Peck Drilling Command, enables the ability to continually peck at a hole like a woodpecker.

Everytime the tool reaches a peck increment, it retracts to the Rapid (R) Plane and then rapids back down into the hole. To avoid crashing the tool, Haas VMC will rapid to plane "Setting 26" which is set to .010 above the last work surface contact. Once at .010, the tool will feed into the next pecking increment.

A Z axis absolute depth value defines the final depth of hole that the peck drilling will not pass.

In this example, the G01 work addresses are used with the addition of a Q.

G83 Peck Drilling Canned Cycle Example:

```
G83 Z___ F___ R___ Q___
```

Q = Constant Peck Increment
Z = Final Depth of Hole
F = Feed Rate (Inches Per Minute)
R = Rapid Plane

© Copyright 1999-2008
Immersive Engineering, Inc.
8000.2011.800049952.80000046.80000102

Procedure Steps

- X Rapid X-axis location
- Y Rapid Y-axis location
- Z Z-depth (lead to Z-depth start at R plane)
- F Feed rate in inches (mm) per minute
- R R-plane (rapid point to start feeding)
- Q Constant Peck Increment

Example:

```
G83 Z-1.5 F10, R0.1 Q0.5
```

T1

Initial Plane

(R0.1) Rapid Plane

(Q 0.5) Peck

(Q 0.5) Peck

(Q 0.5) Peck

(F10) Feedrate

(Z-1.5) Depth

Part SIDE View

The LCMS provides interactive learning, assessments, and reports

For more information

go to

www.immersive.biz

or call +1 248.865.2001

