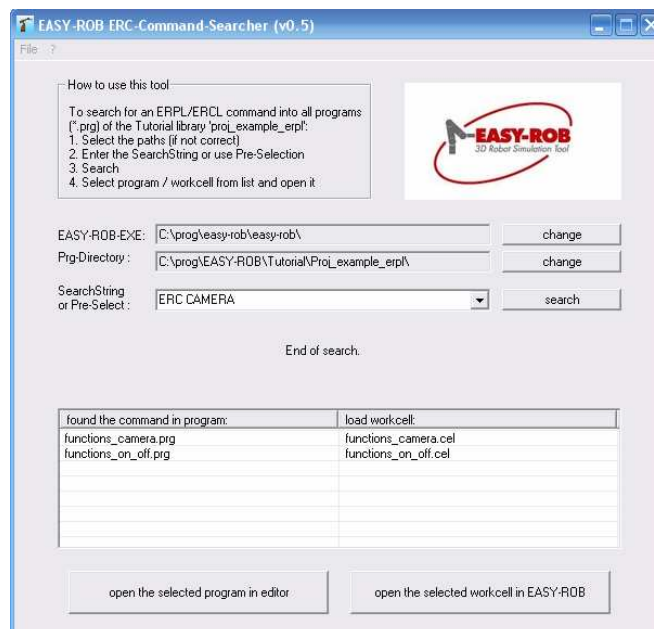


# ERC Command Searcher v0.5

## EASY-ROB™ V4.602



October 2007

Version 1.2



# EASY-ROB™

## Table of contents

Table of contents.....	2
ERC Command Searcher .....	3
Introduction .....	3
Contact .....	4
Notes.....	6

# EASY-ROB™

## ERC Command Searcher


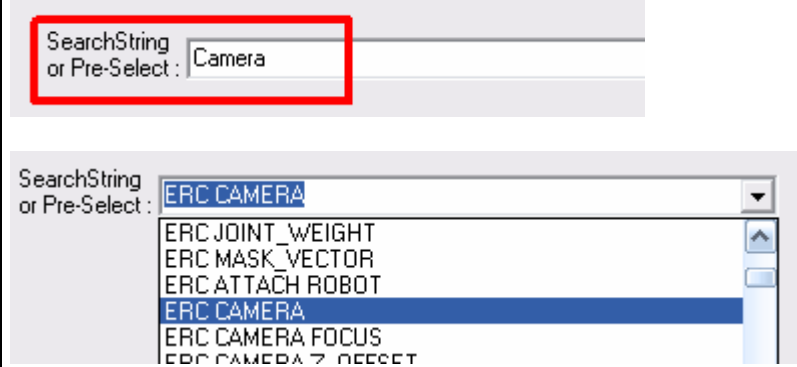
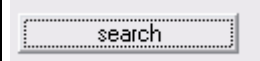
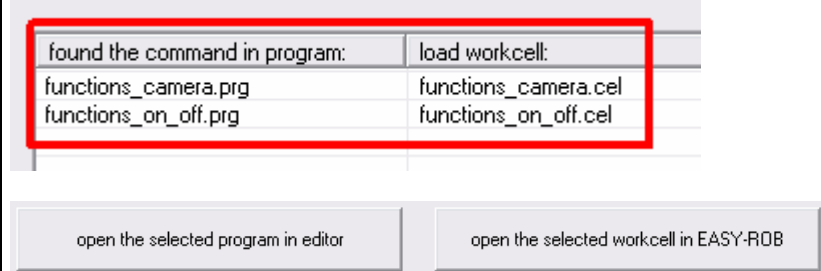
Operation References

### Introduction

The ERC Command Searcher will support the user to search for a specific ERC commands in the example library “Proj\_example\_erpl”, which is normally installed in the directory:  
 “.\\EASY-ROB\\Tutorial\\Proj\_example\_erpl”

The library contains many short example programs with different ERC commands to give an impression how the commands are working.

Place the executable “**easy-rob-erc-search\_v0\_500.exe**” in the folder “.\\Proj\_example\_erpl”.

<p>1. Start the Searcher by double click on the file</p> <p><i>easy-rob-erc-search_v0_500.exe</i></p>							
<p>2. Enter the command you are searching for (e.g. “Camera”)</p> <p>or use the Pre-Selection</p>							
<p>3. Hit the “search button” to start the search</p>							
<p>4. All results/hits will be shown in the list box below.</p> <p>Select by mouse the program or the workcell to load the program in an editor respectively run the simulation to see how the command works and how to use it.</p>	 <table border="1" data-bbox="635 1720 1262 1854"> <tr> <td>found the command in program:</td> <td>load workcell:</td> </tr> <tr> <td>functions_camera.prg</td> <td>functions_camera.cel</td> </tr> <tr> <td>functions_on_off.prg</td> <td>functions_on_off.cel</td> </tr> </table>	found the command in program:	load workcell:	functions_camera.prg	functions_camera.cel	functions_on_off.prg	functions_on_off.cel
found the command in program:	load workcell:						
functions_camera.prg	functions_camera.cel						
functions_on_off.prg	functions_on_off.cel						

## EASY-ROB™

### Contact

**EASY-ROB**  
3D Robot Simulation Tool  
Stefan Anton

Hans – Thoma – Str. 26a  
60596 Frankfurt/Main, Germany

Tel. +49(0)69 677 24 287  
Fax. +49(0)69 677 24 320

Email: [info@easy-rob.com](mailto:info@easy-rob.com), [sales@easy-rob.com](mailto:sales@easy-rob.com)  
Web: <http://www.easy-rob.com>

### EASY-ROB Customer area

Online available: Program Updates and Robot libraries

Web: <http://www.easy-rob.com/en/special/customer-area>

Data:

User: customer  
Password: \*\*\*\*\*



# EASY-ROB™

## Notes